



lr.products)

www.lrproducts.net

Poligono Pont Xetmar
Calle F #28 ES17844 Cornellà de Terri
Girona - Spain

T +34 972 59 64 35 / F +34 972 59 44 68
info@lrproducts.net

**LR PERIPHERAL
CONVERTING PRODUCTS**

Ink viscosity controls
Automatic ink pH regulation
Ink temperature control
Solventless mixers
Monocomponent metering
Solvent based mixers
Automatic flexo wash-up units

lr.products)

LR CONVERTING PERIPHERAL PRODUCTS, SL

**COMPACT & ECONOMICAL
AUTOMATIC SOLVENTLESS
ADHESIVE METER
MIX - DISPENSE SYSTEM
FOR LAMINATION**

- Accurate and reliable
- Consistent Production control
- Automatic g/m² calculations
"on the fly" ratio changes
- Production data reports
- Trouble-free Maintenance
- Several automatic refilling options



bi-2 mixer MINI

SOLVENTLESS ADHESIVES MIXING EQUIPMENT

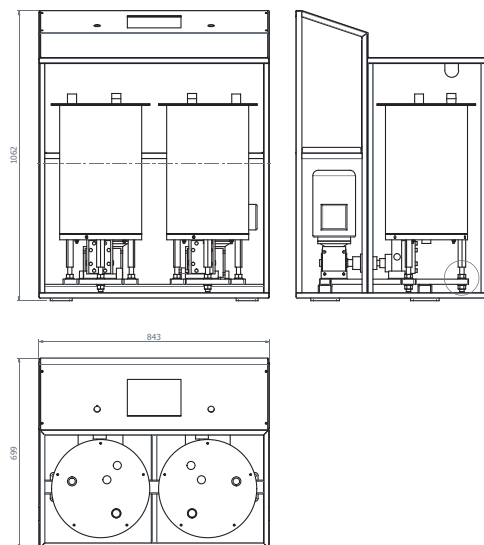
Gear pumping technology.
More compact new design.
Maximum reliability.



CONTROL PLUS ACCURACY IN MIXING WITH MAXIMUM RELIABILITY

The bi-2 mixer MINI is the compact version for the industry's well know **(r.products)** bi-2 mixer equipment. It's based on the same technical solutions for solventless adhesive mixing and metering, reaching the same level of accuracy and quality during the lamination process, but using a smaller, compact and more economical equipment.

This is achieved by means of the proven **(r.products)** gear pumping technology, controlled by an industrial electronic PLC platform and a proprietary developed software.



bi-2 mixer MINI automatic refilling options



AUTOFILL GRAV

- Rellenado automático mediante 2 válvulas adicionales.
- El adhesivo fluye simplemente por gravedad.
- Funcionamiento ideal para contenedores de adhesivo tipo IBC de 1.000 kg.
- Los contenedores han de estar colocados encima del equipo dosificador.



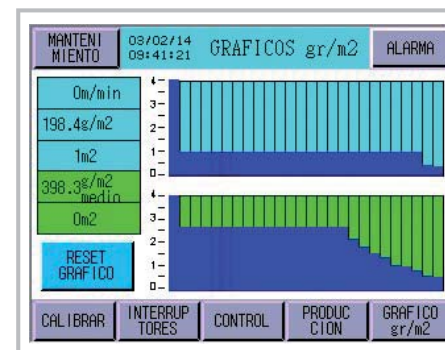
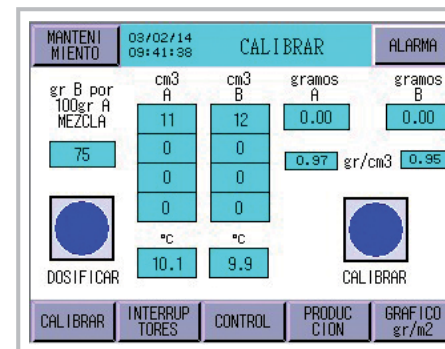
AUTOFILL NEUMAT

- Rellenado automático mediante dos bombas neumáticas adicionales.
- Funcionamiento ideal para bidones de adhesivo de 200 kg.
- Permite usar los bidones de adhesivo en posición vertical.
- Sin necesidad de manipulación ni volteo.



AUTOFILL PUMP

- Rellenado automático mediante bombas de engranaje adicionales de trasiego.
- Permite el relleno remoto, distancia de hasta 50 metros aprox.
- Instalación de relleno automático simultáneo para varias laminadoras.
- Soluciones a medida para cada planta.



USER FRIENDLY EQUIPMENT

- Replaceable static mixer on the mixing head.
- Adhesive mixing and application just before the metering point.
- Easy to install at set-up.
- 35 kg fixed tanks, on stainless steel.
- Tool free, easy to clean and manipulate.
- PORTABLE: Can be easily moved.

OUTSTANDING FEATURES

1 Unique in the market: calibration function

- The calibration function allows the system to calibrate according to the adhesive chosen.
- Once done, the unit accurately meters the exact amount of each component in weight ratio.

2 In line g/m² calculation function

- Once calibrated, the PLC makes a continuous calculation for the g/m².
- A graphic display shows the operator any deviation from the desired amount

3 Very compact design

- 35 kg non movable tanks, made on stainless steel.
- Equipment integrates the electronics, tanks and motors inside.

INCLUDED FEATURES

- Totally free of cleaning and maintenance problems.
- High accuracy, easy to use and even easier to install.
- MAN/AUTO, 'clean' and 'empty tanks' function.
- Variable flow according to consumption.
- Alarms and troubleshooting diagnostics.
- Reports on consumption, output and g/m² coating.
- Optimum temperature of adhesive maintained prior to production.
- Can be installed in any laminator available in the market.
- Totally problem free maintenance.
- Independent temperature selection.
- In-tanks temperature sensor for the adhesive.
- Permanent level control by means of ultrasonic sensors.

Blocking valve as an optional



- Blocking valve for mixing thick adhesives.
- Recommended when using very thick adhesives, or adhesive systems with a very big difference in both component viscosities.
- It will prevent drop leaks from the mixer on the laminator.
- Independent blocking system for the 2 components.